

Invitation Winter School 2012

The German-Israeli Cooperation in Cancer Research was founded in 1976 and is the longest lasting scientific cooperation of Germany with Israel. To date 134 projects have been successfully completed. Beyond this, the cooperation led to friendship between scientists of both countries and other involved partners (www.dkfz.de/israel).

During the 30th Anniversary in 2006, the idea for an annual research school for students of the program was conceived. The aim of this school is to provide a platform for intensive interaction between students, young researchers and principal investigators of the program from both, Israel and Germany.

The first school was held in 2008 in Pichl, Austria and was a great success so that immediately after the first school, the students requested that the school be held every year, alternating between Pichl and Israel.

The 2012 research school will be held in Pichl and the focus will be on metabolism and cancer, with lectures in both basic and translational lectures from prominent Israeli and German scientists.

The speakers will highlight recent advances in common signaling nodes between normal and tumor cells, discuss the recently established risk connection between metabolic dysfunction and cancer, and present novel therapeutic approaches in this area of biomedicine. The format of the school will include lectures in the morning and in the late afternoon. During the prolonged lunch break (12.00 - 16.00), there will be the opportunity for skiing or other winter sports. During the poster sessions, the participants are expected to give short presentations (10 min), explaining their research. The best posters will be awarded a prize. Participation is restricted to 24 students who will be selected by the Scientific Committee.

If you wish to apply for the next winter school, please obtain an application from the school secretary, Mrs. Mang (e-mail: e.mang@dkfz.de). Each applicant will be requested to state his/her motivation to participate and to provide a copy of his/her C.V., including a (jpeg format) picture. The costs of lectures, accommodation (double room), breakfast and dinner from December 9 (evening) to December 13 (morning) are covered. However, participants have to pay for their travel costs (Israeli participants flight costs, for German participants, the return fare from Heidelberg by bus is 100 Euro). All lunches and costs for sports are at the expense of the participants as well.

Wolfhard Semmler

Varda Rotter

Organizers

School:

DKFZ: Prof. Dr. Dr. Wolfhard Semmler
Israel: Prof. Dr. Varda Rotter

Scientific Program Committee:

DKFZ: Prof. Dr. Stephan Herzig
Israel: Prof. Dr. Ari Elson

German-Israeli Cooperation in Cancer Research

DKFZ: Prof. Dr. Dr. Wolfhard Semmler
Israel: Dr. Ahmi Ben-Yehudah, Nurit Topaz

Contact Address DKFZ

Elfriede Mang
Deutsches Krebsforschungszentrum
Im Neuenheimer Feld 280
D-69120 Heidelberg
phone +49 6221 42 4499
Fax +49 6221 42 4498
e-mail e.mang@dkfz.de

Contact Address MOST

Nurit Topaz
Director, Dept. of international Relations with
Germany and International Organizations
Ministry of Science and Technology
Jerusalem
phone +972 2 5411157
Fax +972 2 5825725
e-mail nurit@most.gov.il

Venue:

Hotel Pichlmayrgut

School Secretariat in Pichl

Tatiana Golea



dkfz.

GERMAN
CANCER RESEARCH CENTER

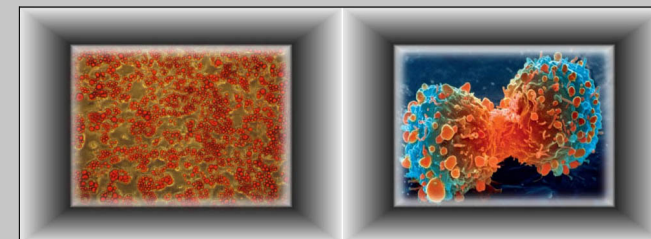


Ministry of Science
and Technology



5th German-Israeli
Cancer Research School

Metabolism and Cancer



Pichl / Austria
December, 9th - 13th, 2012

5th German-Israeli Cancer Research School, Pichl, December 9th - 13th, 2012

Monday, December 10th, 2012

Moderators: NN & NN

- 08:30 **Welcome & Introduction**
Ari Elson & Stephan Herzig
Ahmi Ben-Yehudah & Wolffhard Semmler
- 09:00 **Metabolic reprogramming in lymphoma development and therapy**
Jan Doerr, Berlin
- 09:45 **Increased risk of cancer on obesity and diabetes; is hyperinsulinemia the culprit?**
Derek LeRoith, Haifa
- 10:30 **Signaling and metabolism in Neoplastic cells**
Carolyn Algire, Heidelberg
- 11:15 **Transcriptional and epigenetic control of the IGF-1 receptor gene: implications in metabolism and cancer**
Haim Werner, Tel Aviv
- 12:00 **Skiing/winter sports**
- 16:00 **Coffee and cake**
- 16:30 **Poster Session by students & general discussion**
Moderator: NN
- 18:30 **Dinner**
- 19:45 **Sledging**
- 22:00 **Social gathering**

Tuesday, December 11th, 2012

Moderators: NN

- 08:45 **Growth control by mTOR**
Mario Pende, Paris
- 09:30 **Elucidation of metabolic changes in breast cancer using high resolution mass spectrometry based proteomics**
Tamar Geiger, Tel Aviv
- 10:15 **Coffee and cake**
- 10:30 **Promotion of metabolic health and lifespan by transiently increasing oxidative stress**
Michael Ristow, Jena
- 11:15 **Protein tyrosine phosphatases in cancer and metabolism**
Ari Elson, Rehovot
- 12:00 **Skiing/winter sports**
- 16:00 **Coffee and cake**
- 16:30 **Poster Session by students & general discussion**
- 19:00 **Dinner**
- 20:00 **Exploring dietary and metabolic mechanisms of colorectal cancer development. Recent results from the EPIC cohort**
Mazda Jenab, Lyon
- 20:45 **Regulation of mammalian life-span by sirtuins**
Haim Cohen, Ramat Gan

Wednesday, December 12th, 2012

Moderators: NN & NN

- 08:45 **Nutrition, lifestyle and cancer: epidemiological evidence implicating the role of endogenous hormones and metabolism**
Rudolf Kaaks, Heidelberg
- 09:30 **Metabolic control of cancer cell's fate**
Eyal Gottlieb, Glasgow
- 10:15 **Coffee and cake**
- 10:30 **PPARs stand at the crossroads of metabolism, tissue repair and cancer**
Walter Wahli, Lausanne
- 11:15 **p53 and systemic metabolism - from regulation of atherosclerosis to chemotherapy clearance**
Ido Goldstein, Rehovot
- 12:00 **Skiing/winter sports**
- 16:00 **Coffee and cake**
- 16:30 **Typ 2 diabetes and risk of cancer**
Karsten Muessig, Duesseldorf
- 17:15 **Poster Awards**
- 17:30 **Concluding Discussions**
- 19:00 **Dinner**